



FOR SALE

# IDOL

59.90M (196'06") | AUSTAL | 2007 / 2022



FRASER



## OVERVIEW

|               |                   |
|---------------|-------------------|
| BUILDER       | AUSTAL            |
| BUILT / REFIT | 2007 / 2022       |
| BEAM          | 10.55M / 34'07"   |
| DRAFT         | 2.57M / 10'06"    |
| GROSS TONNAGE | 918               |
| STATEROOMS    | 7                 |
| GUESTS        | 14                |
| CREW          | 14                |
| HULL MATERIAL | ALUMINUM          |
| SPEED         | 12 KNOTS / 15 MAX |
| FLAG          | MALTA             |

## EXPERT'S VIEW

*"A perfect balance of power and elegance, this remarkable high-volume superyacht, crafted by the renowned Austal shipyard, offers an exceptional presence on the water. Vast exterior decks flow seamlessly into a luminous, contemporary interior, creating generous spaces for both relaxation and refined entertaining. Her Touch & Go helideck enhances operational flexibility, ensuring effortless arrivals and departures in true superyacht style. Maintained to an exemplary standard, she is presented in outstanding condition and fully prepared for extended cruising. VAT paid and commercial compliant, she stands as an outstanding opportunity for an owner seeking both capability and sophistication."*

IDOL | 59.90M / 196'06"

PROFILE VIEW

 FRASER



IDOL | 59.90M / 196'06"

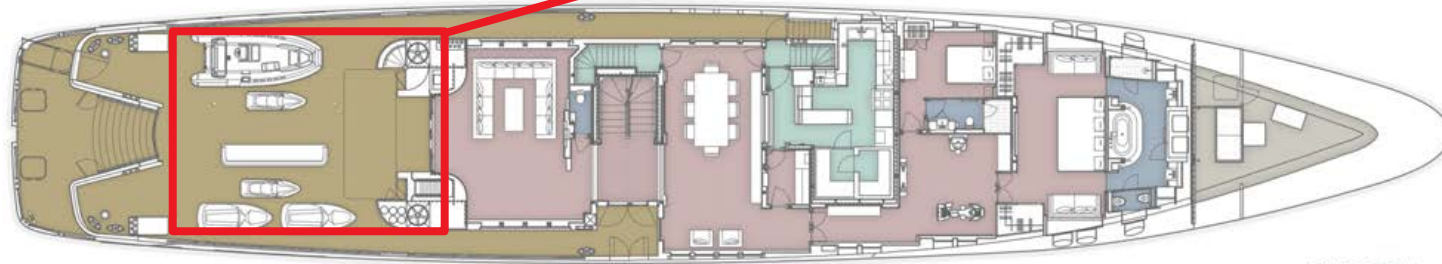
PROFILE VIEW IN DUBAI

 FRASER



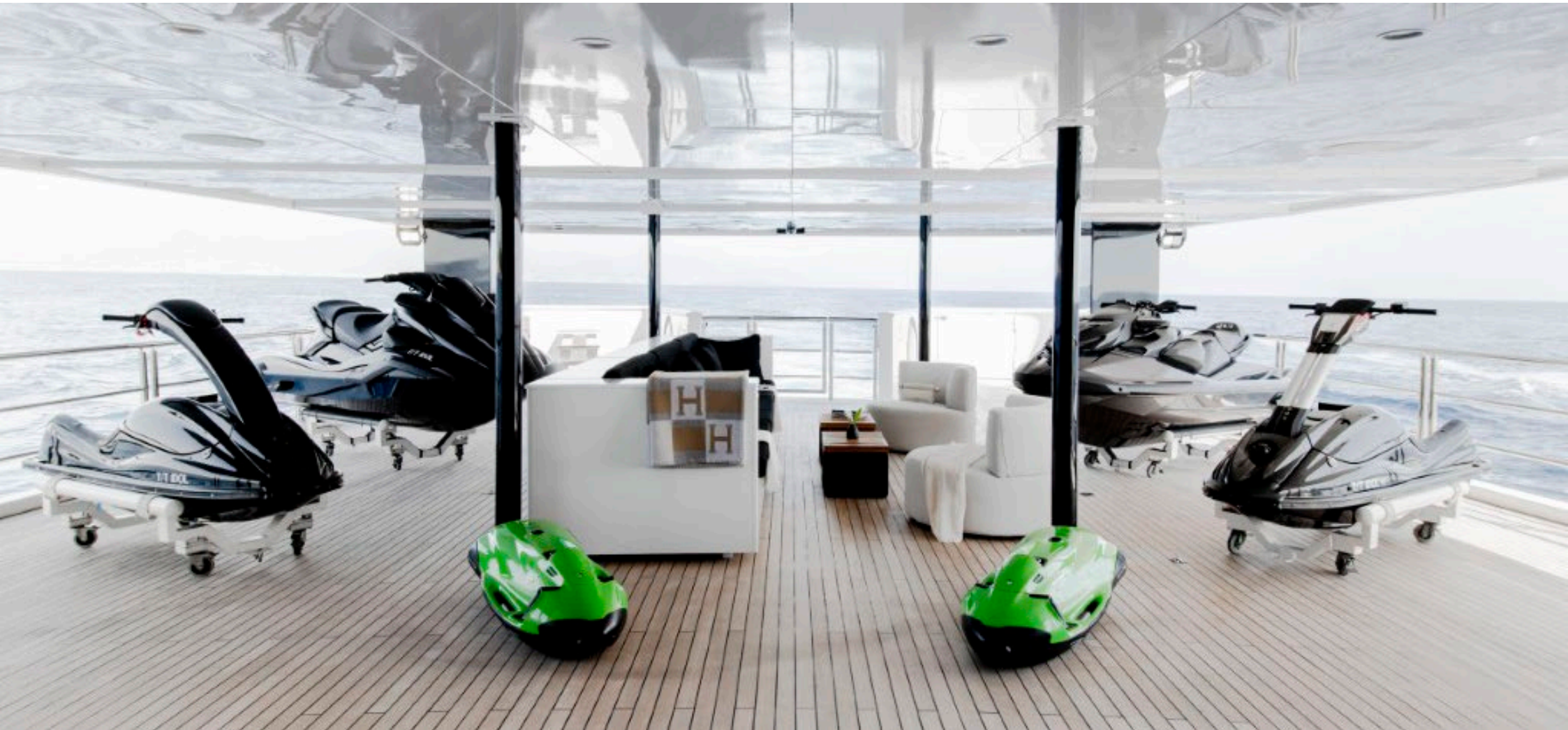
*This image has been edited by photoshop to illustrate the touch and go helipad*

LOUNGE AREA & TOYS GARAGE



MAIN DECK

MAIN DECK

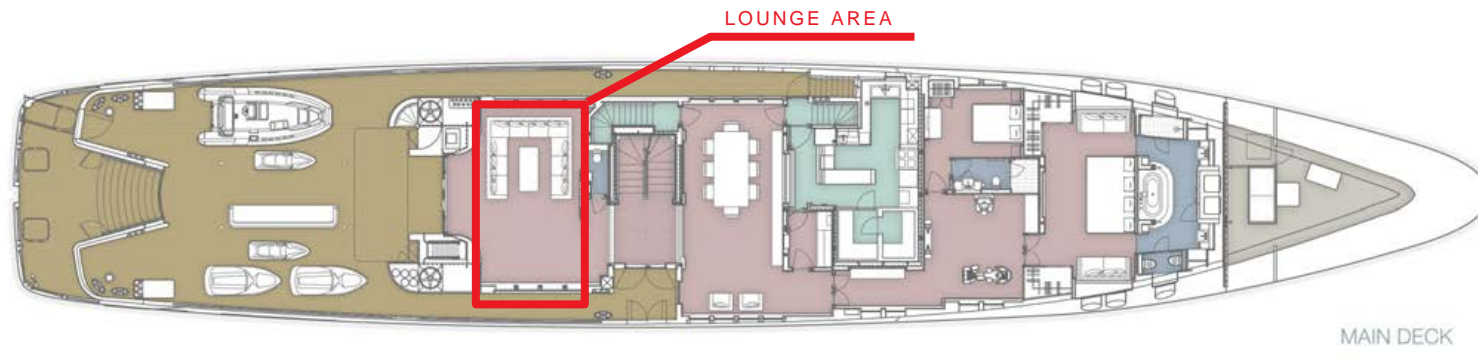


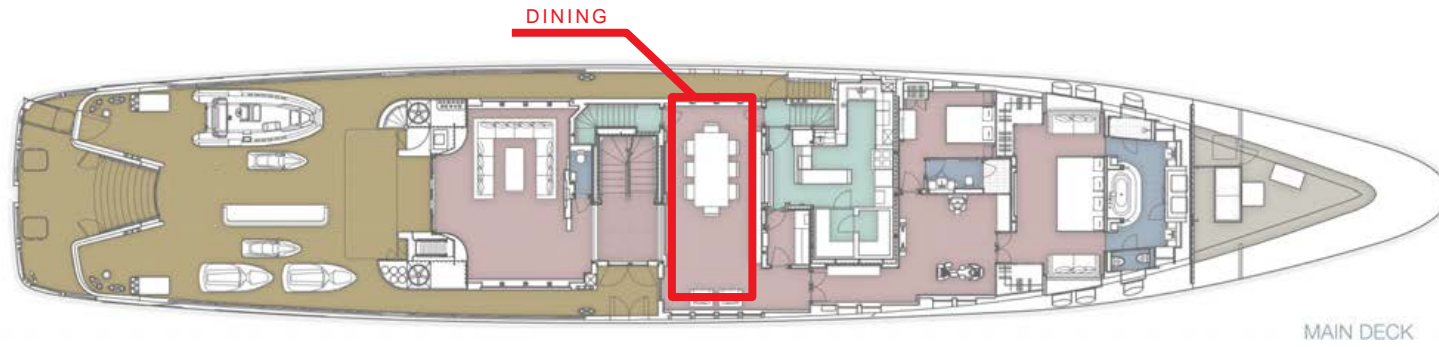
IDOL | 59.90M / 196'06"

MAIN DECK AFT EXTERIOR

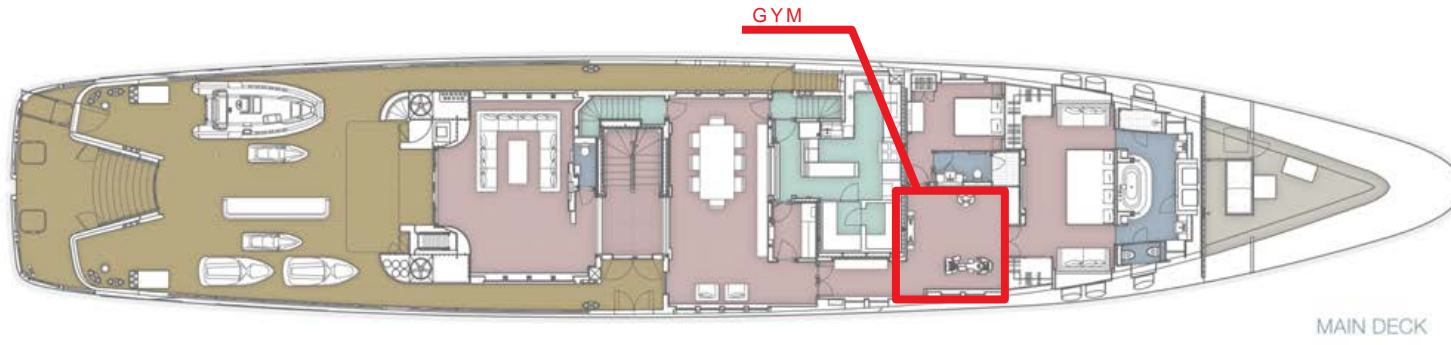
 FRASER











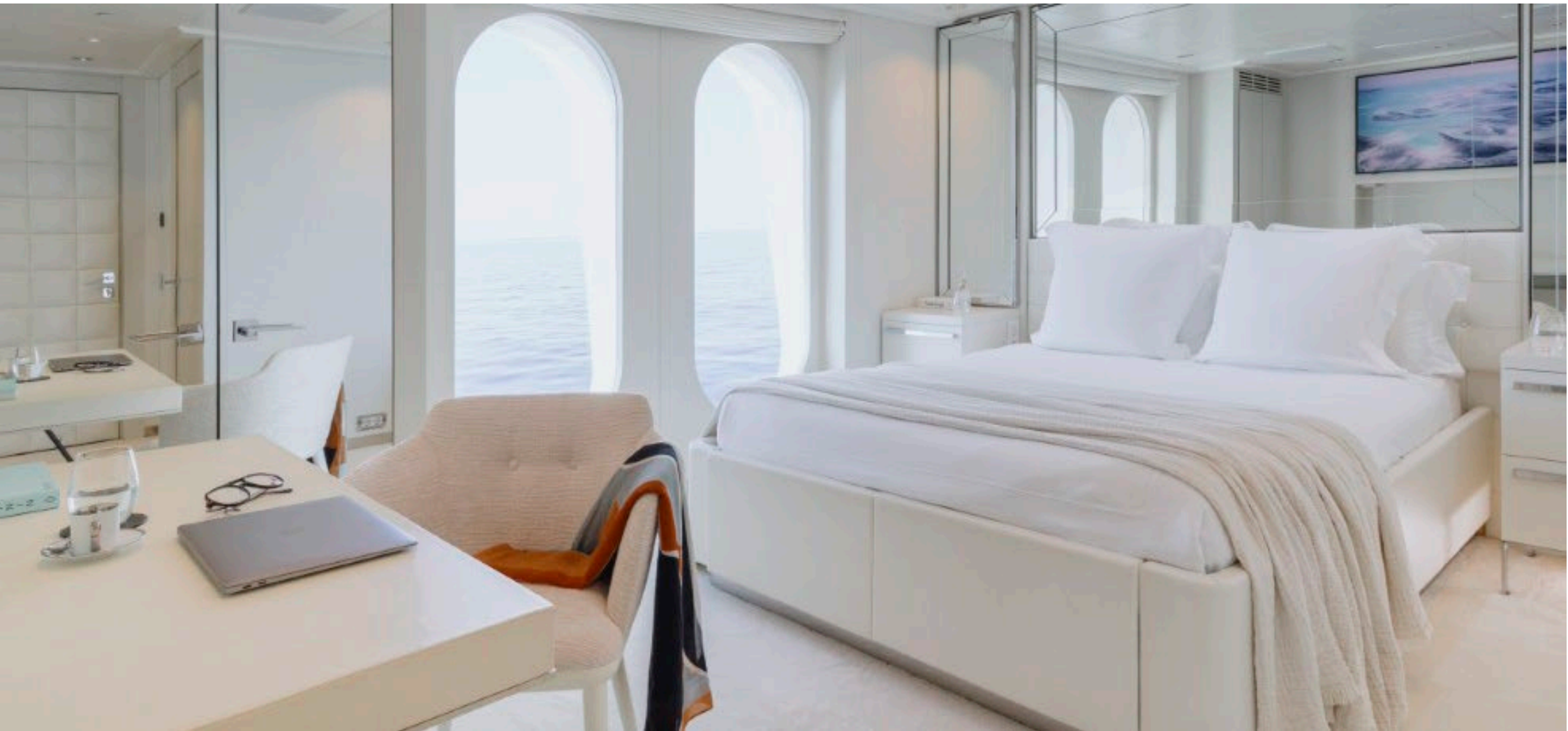
MAIN DECK

MAIN DECK



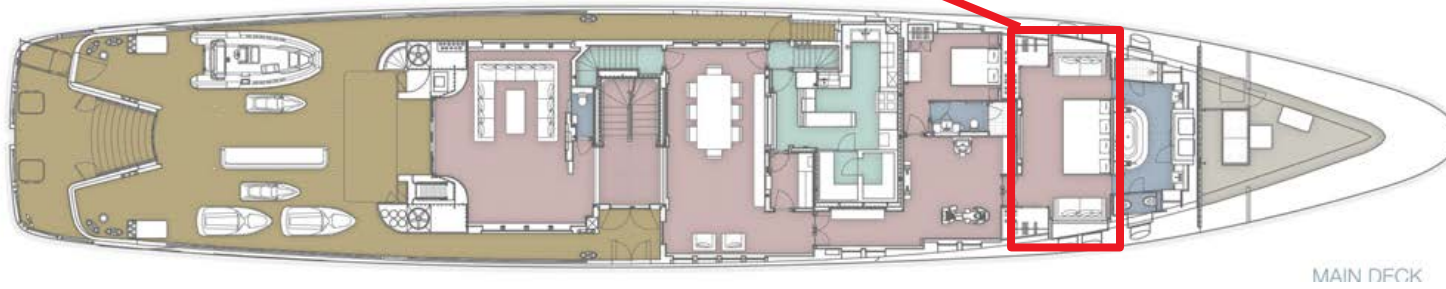


BODYGUARD'S STATEROOM





MASTER STATEROOM

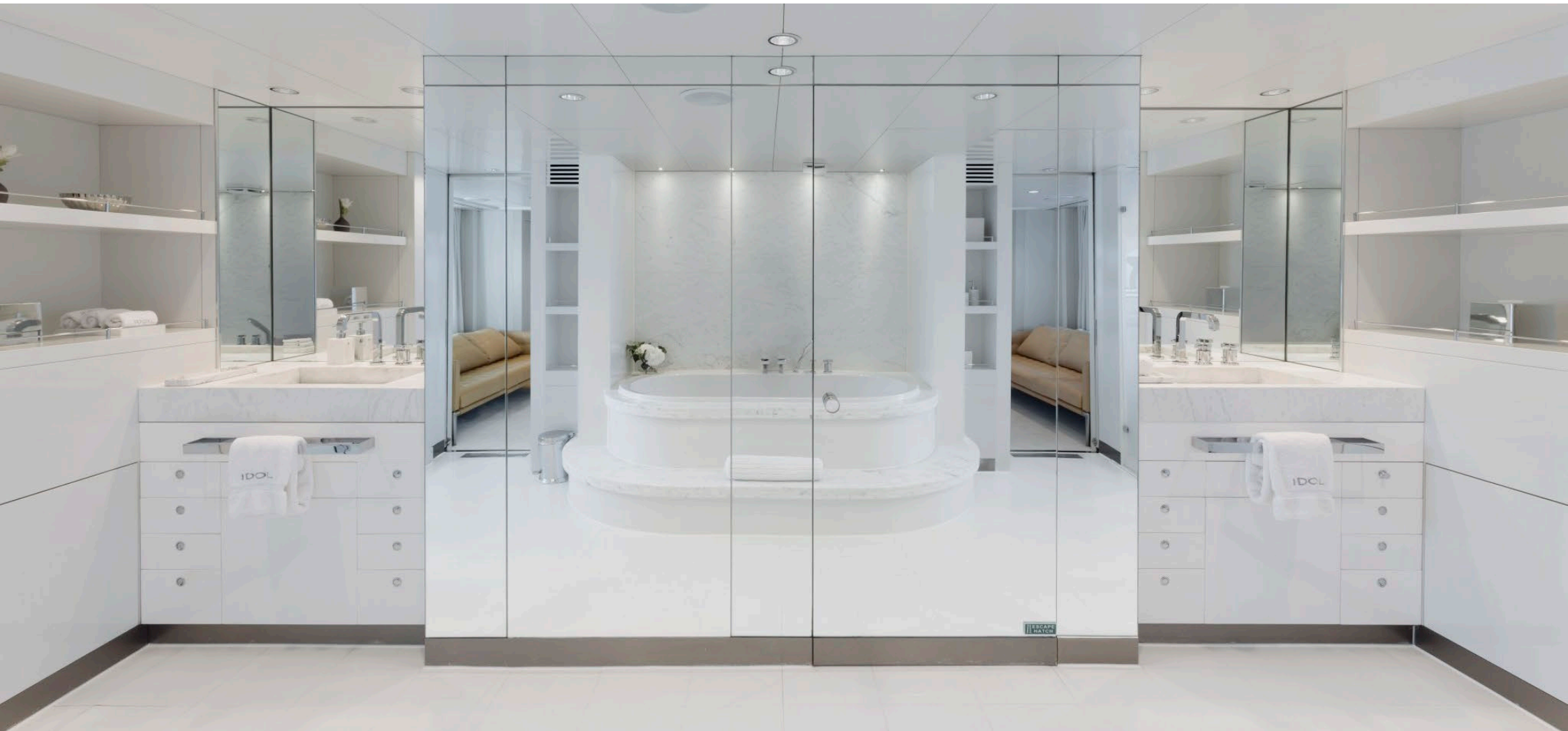
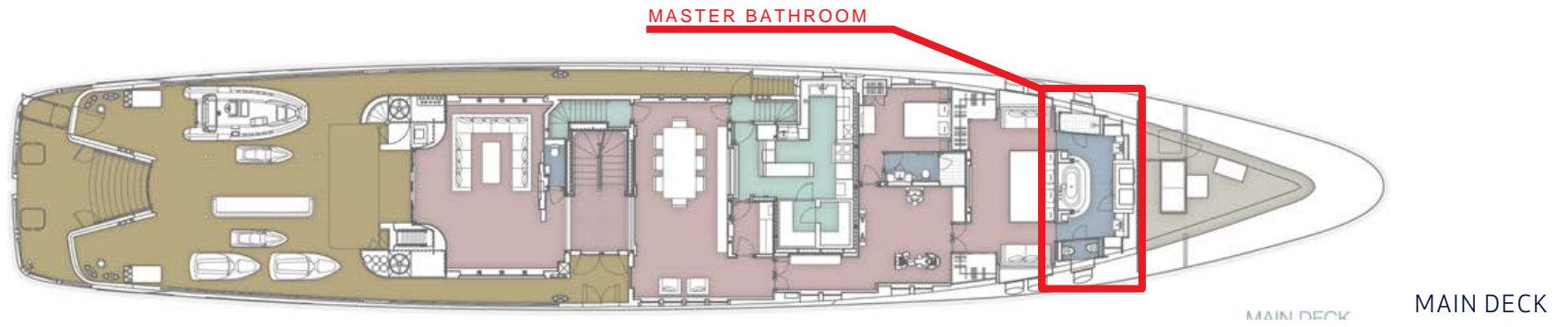


IDOL | 59.90M / 196'06"

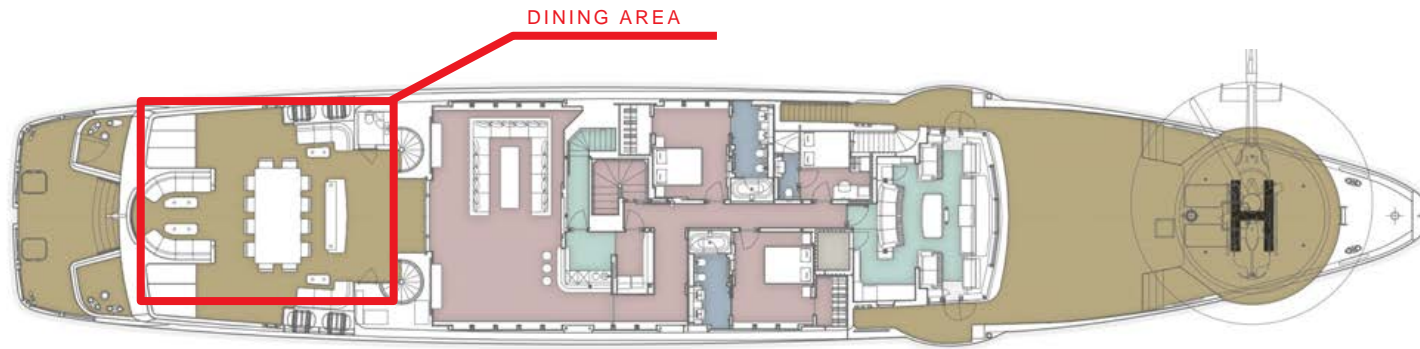
MASTER STATEROOM

 FRASER 



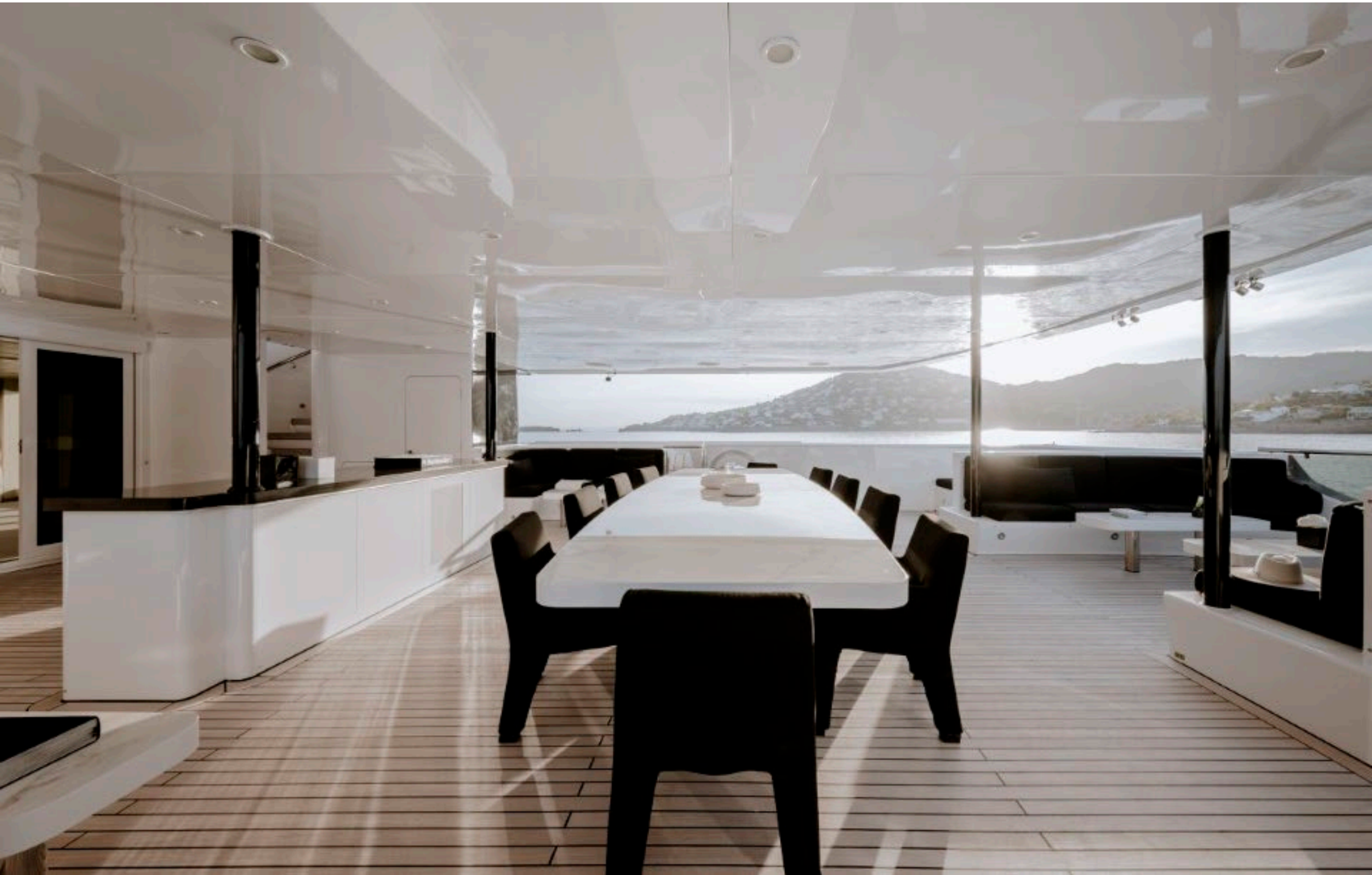






BRIDGE DECK



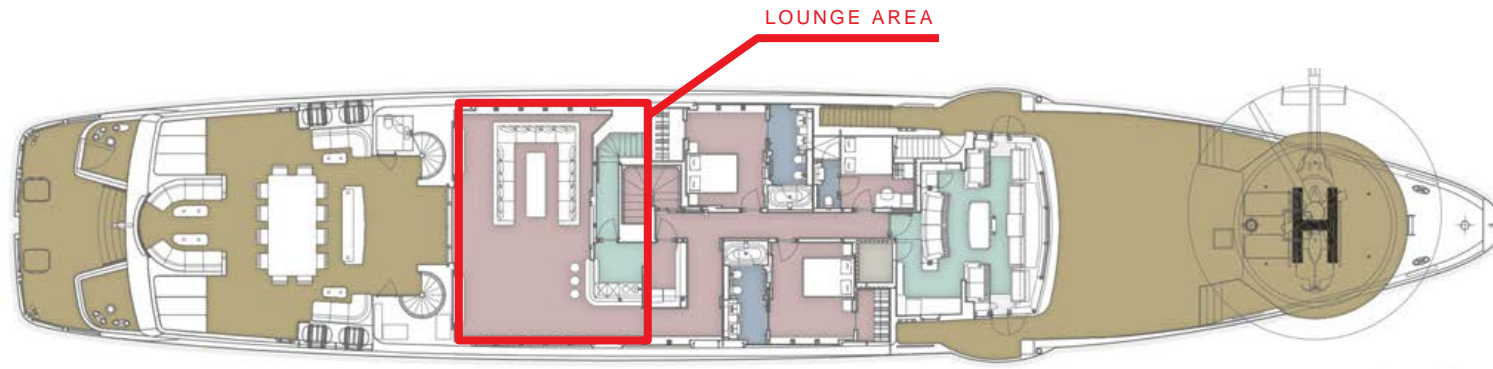


IDOL | 59.90M / 196'06"

LOUNGE ON BRIDGE DECK

 FRASER



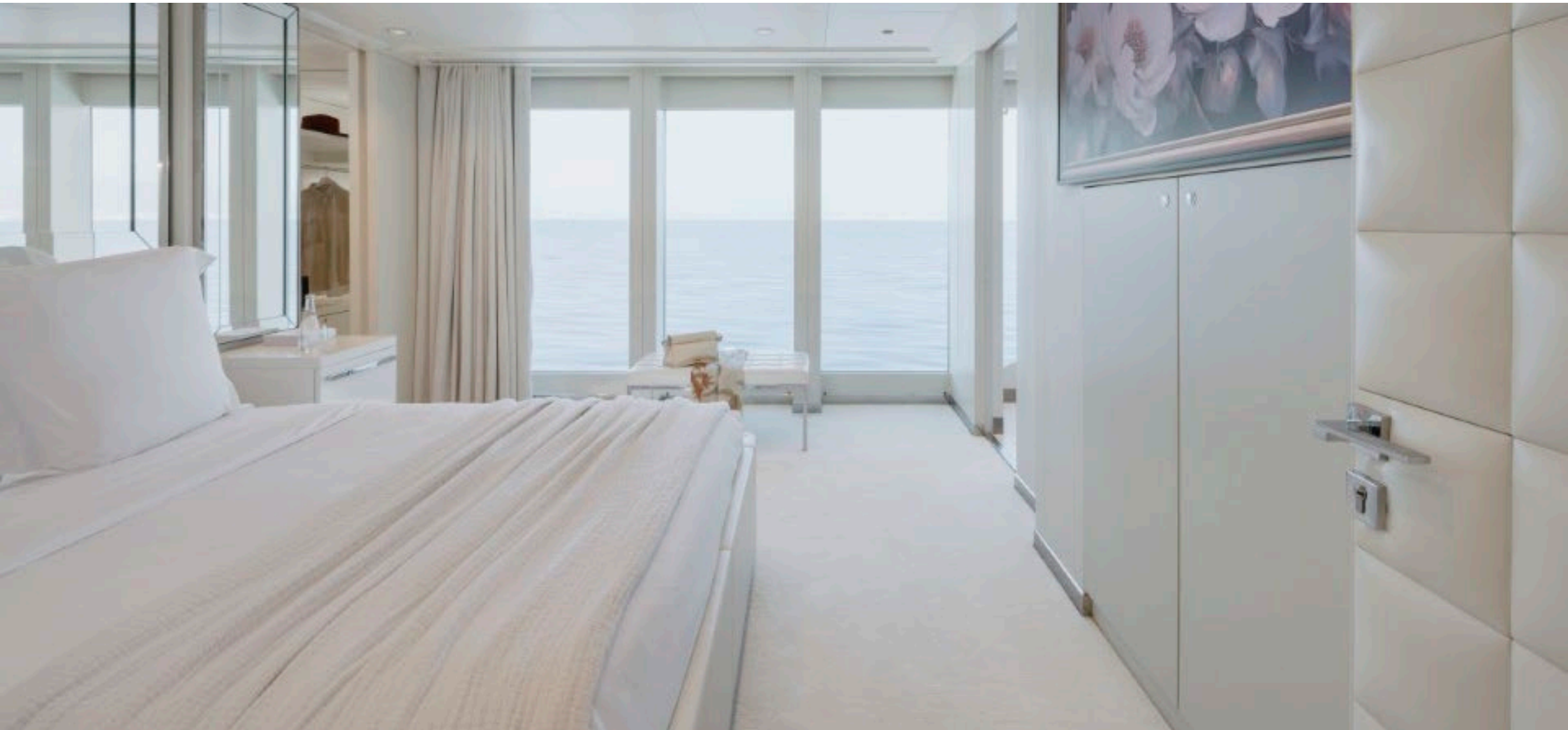
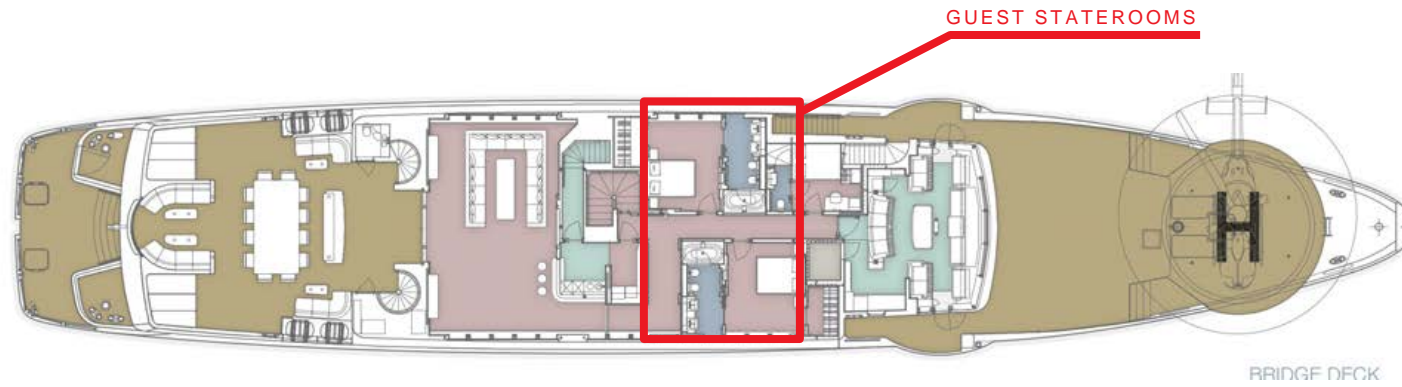


BRIDGE DECK

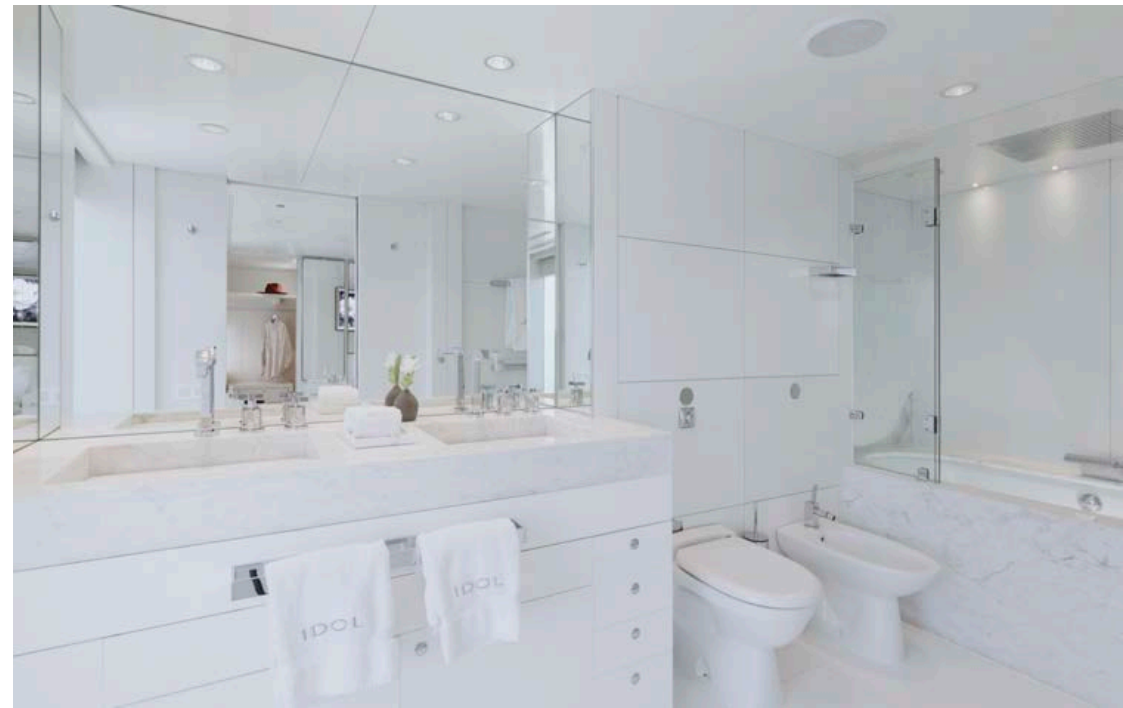




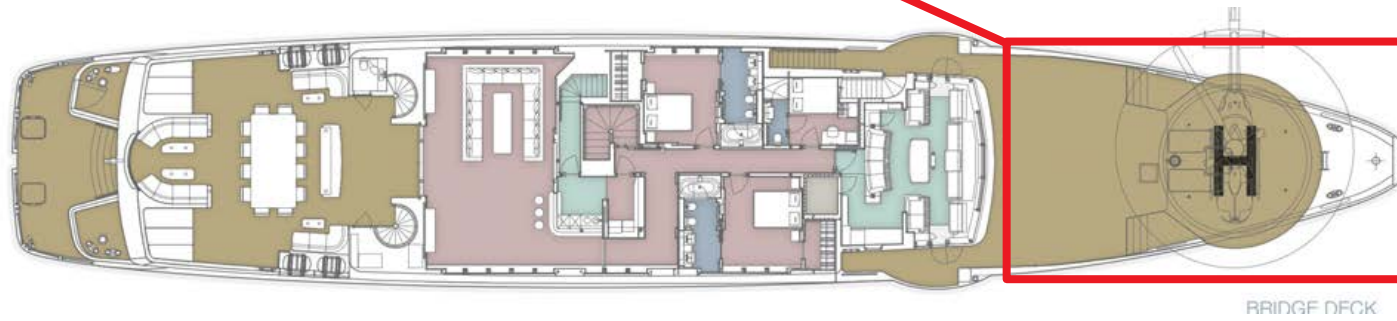




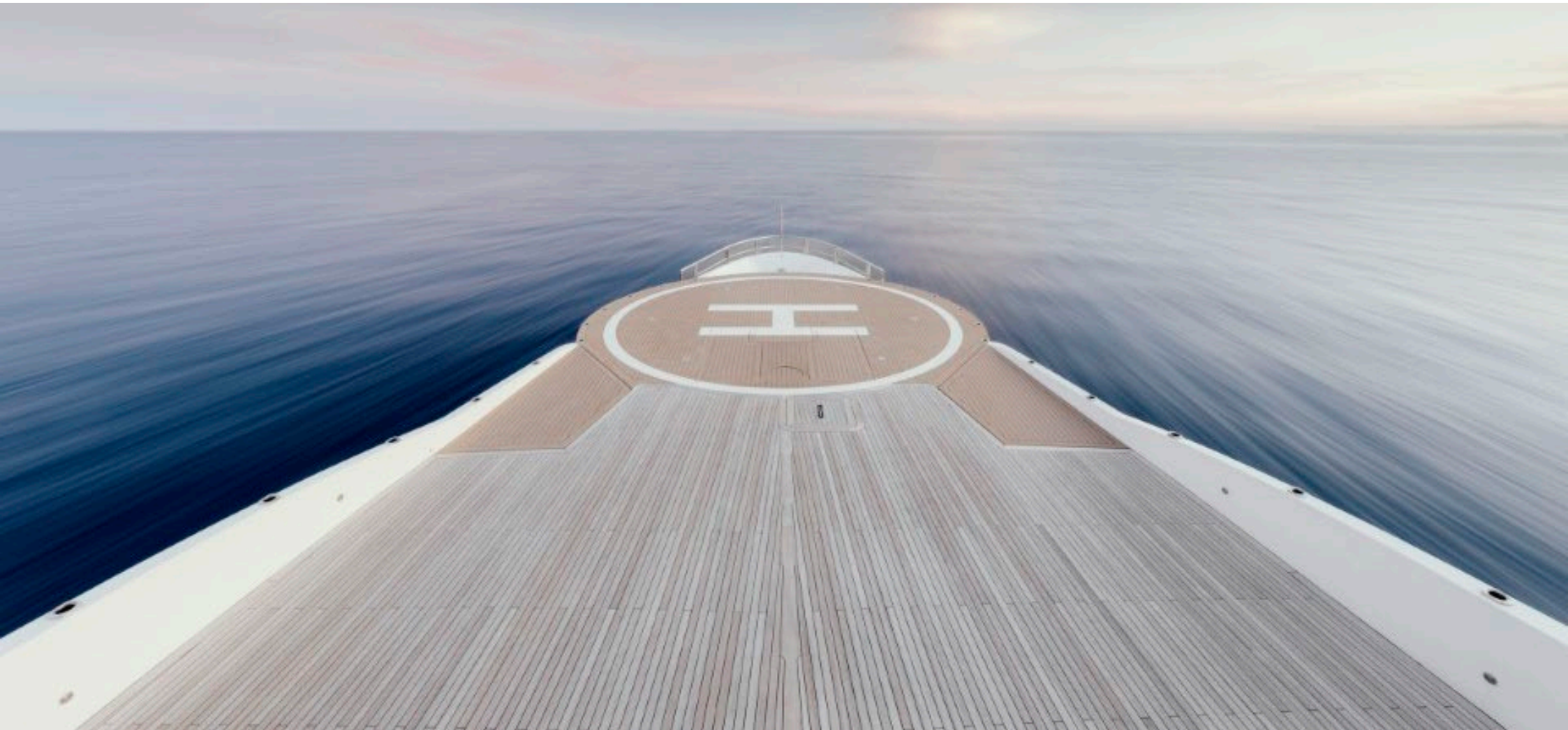


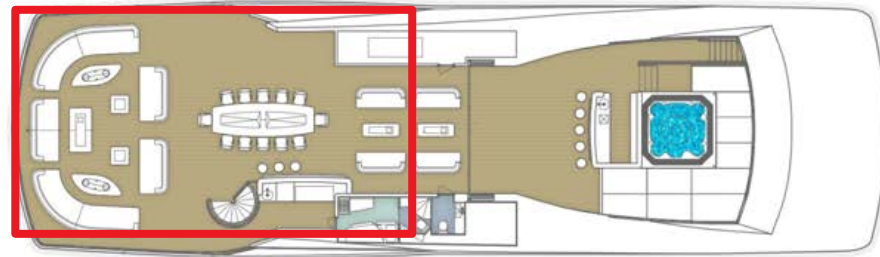


BRIDGE DECK HELI PAD

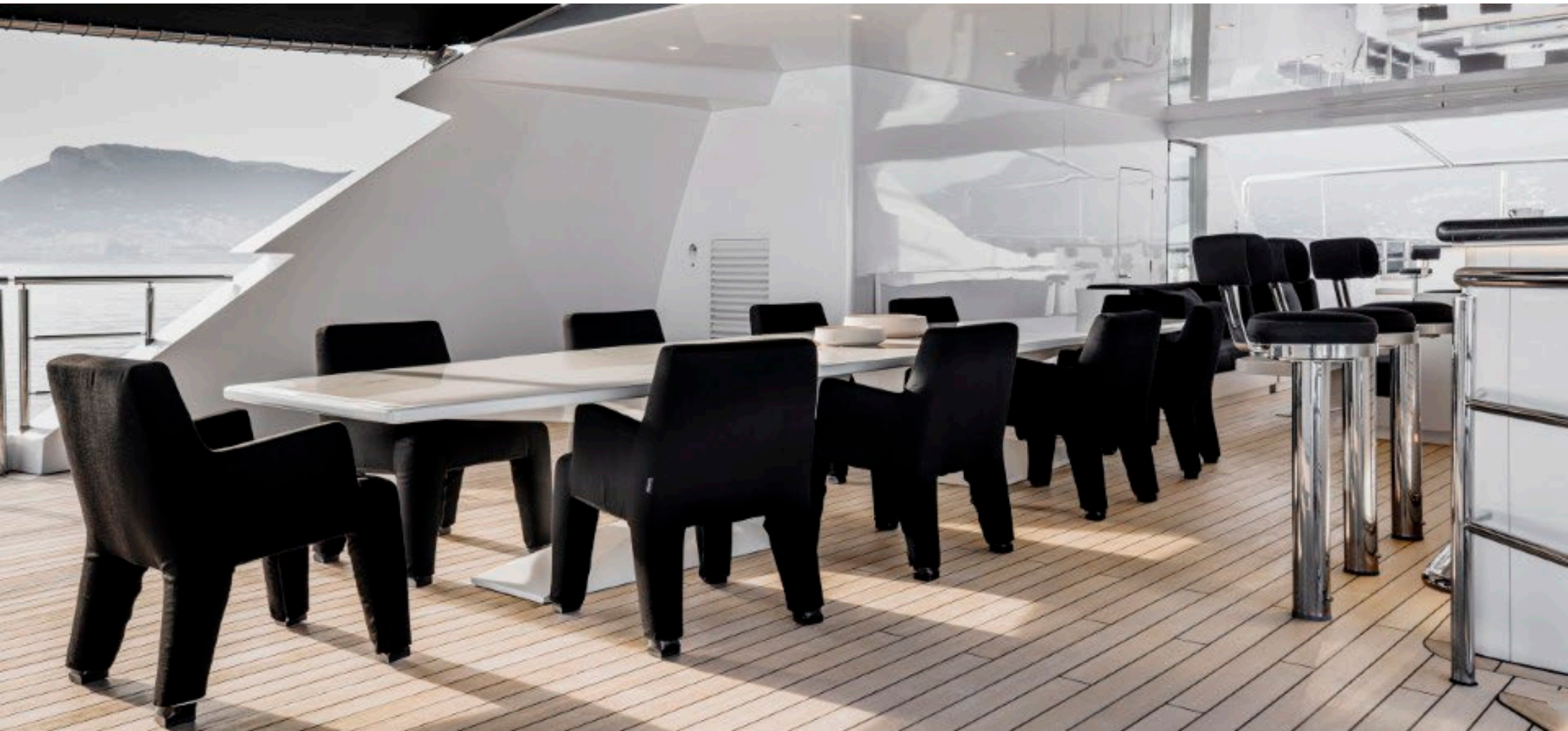


BRIDGE DECK





SUN DECK



IDOL | 59.90M / 196'06"

SUN DECK LOUNGE

 FRASER

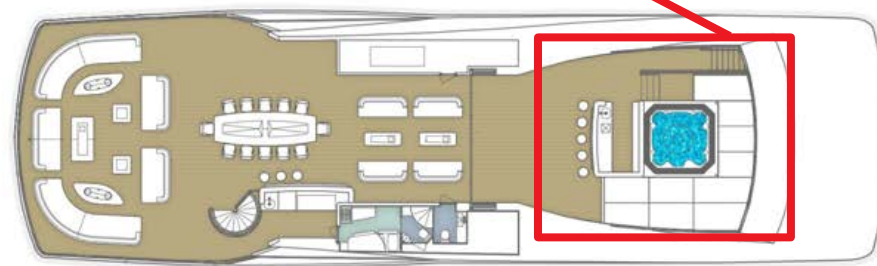








HOT TUB



SUN DECK

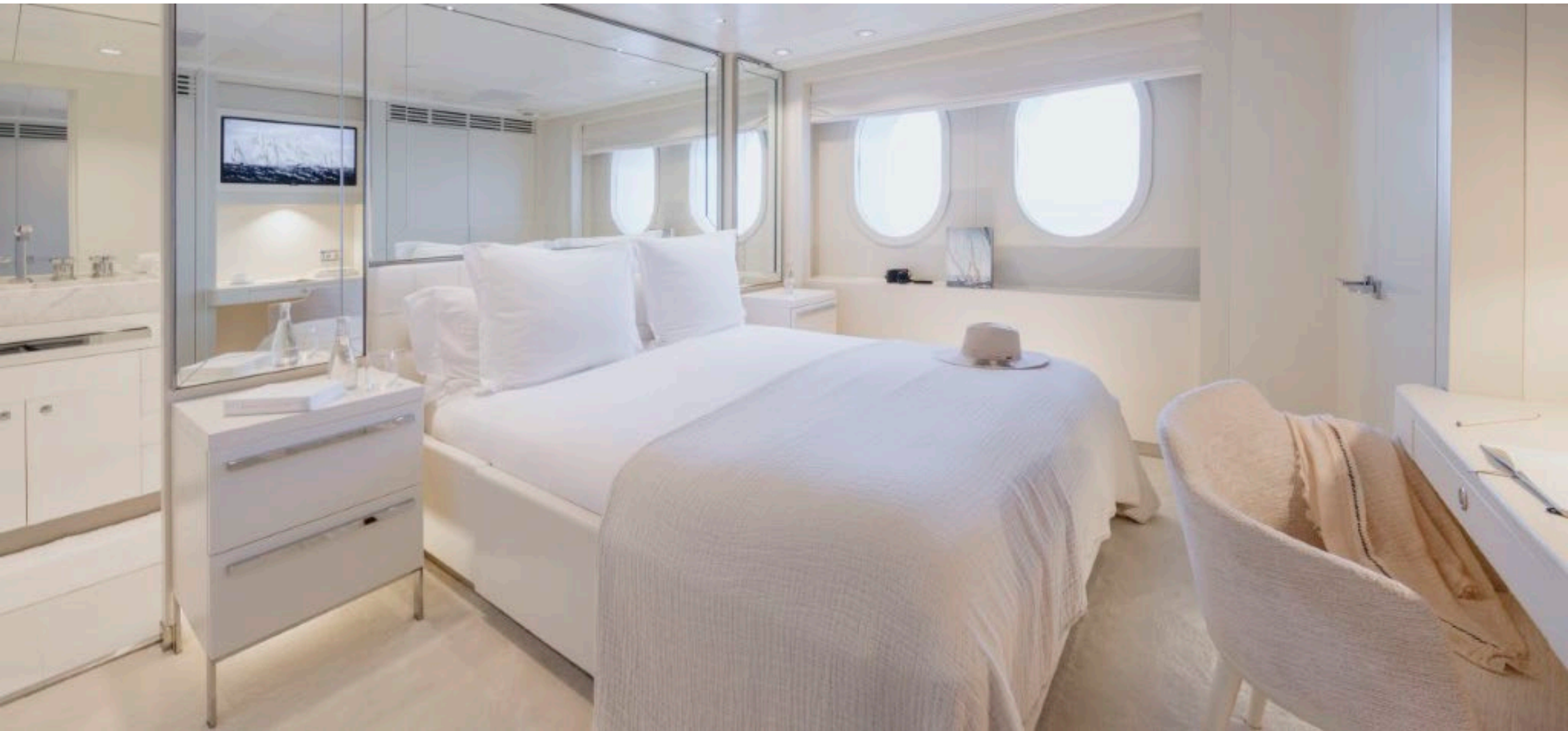


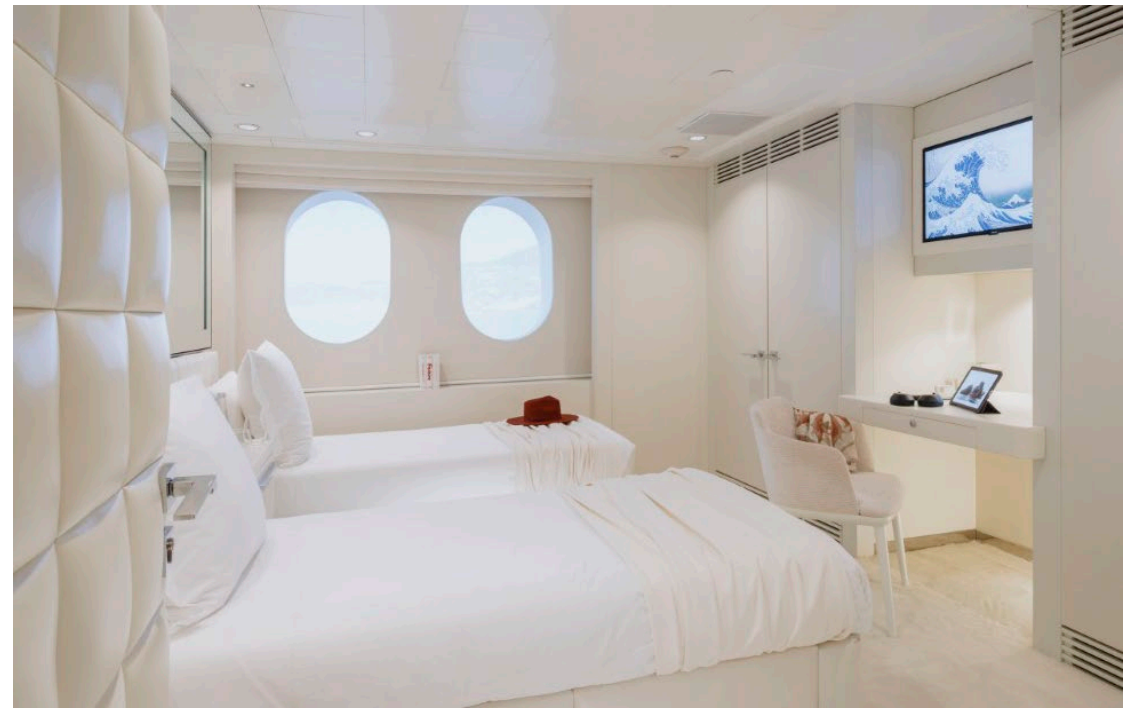
GUESTS AREAS

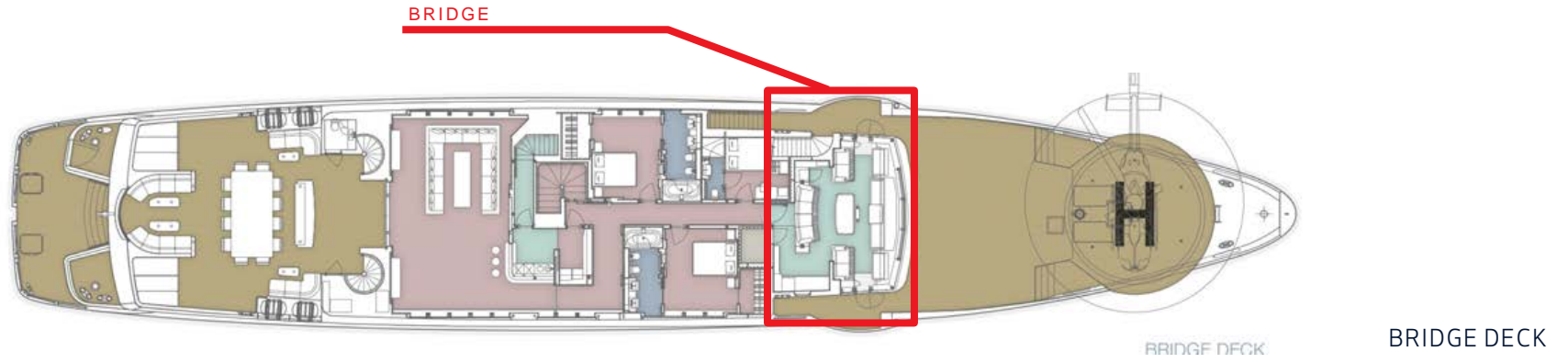


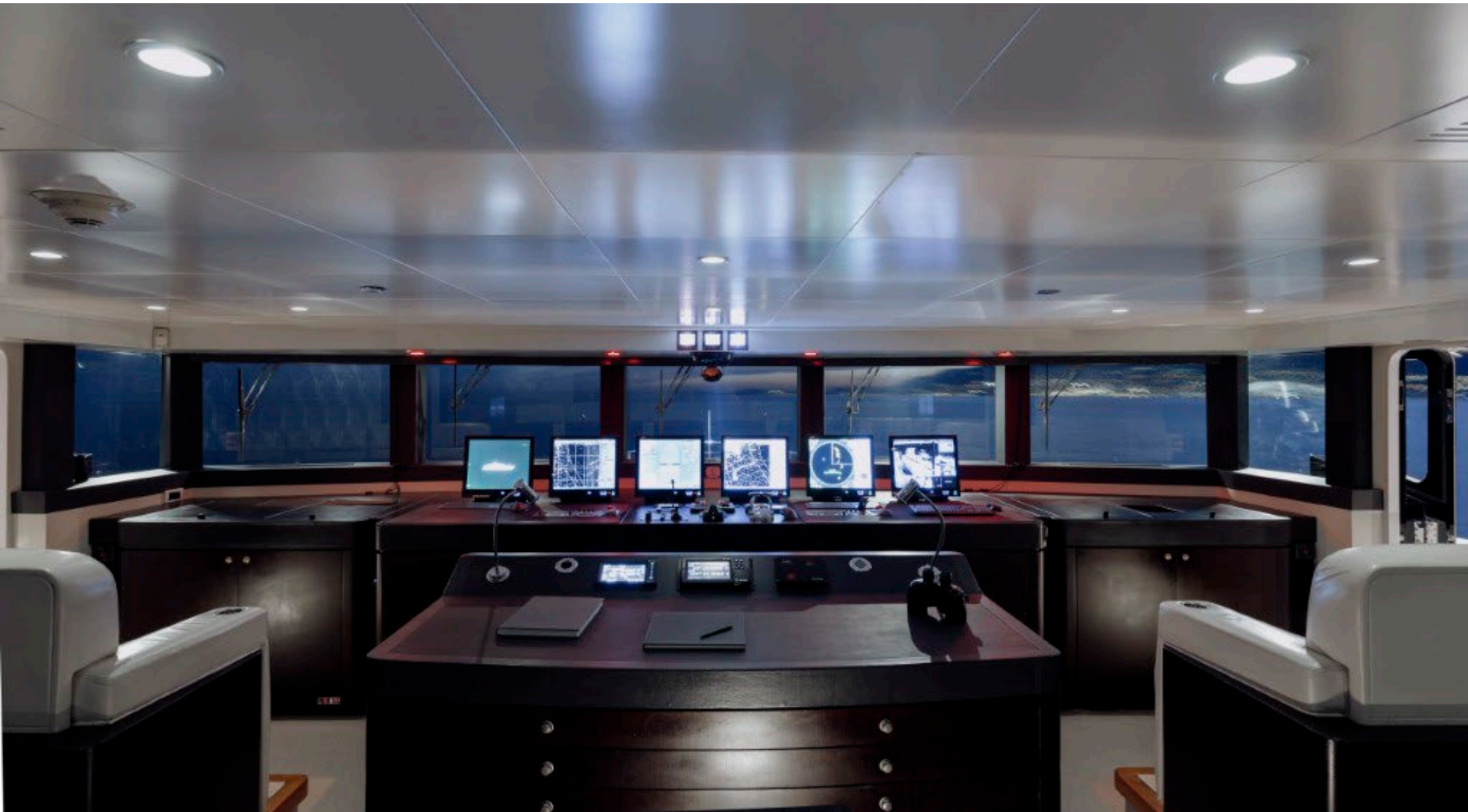
LOWER DECK

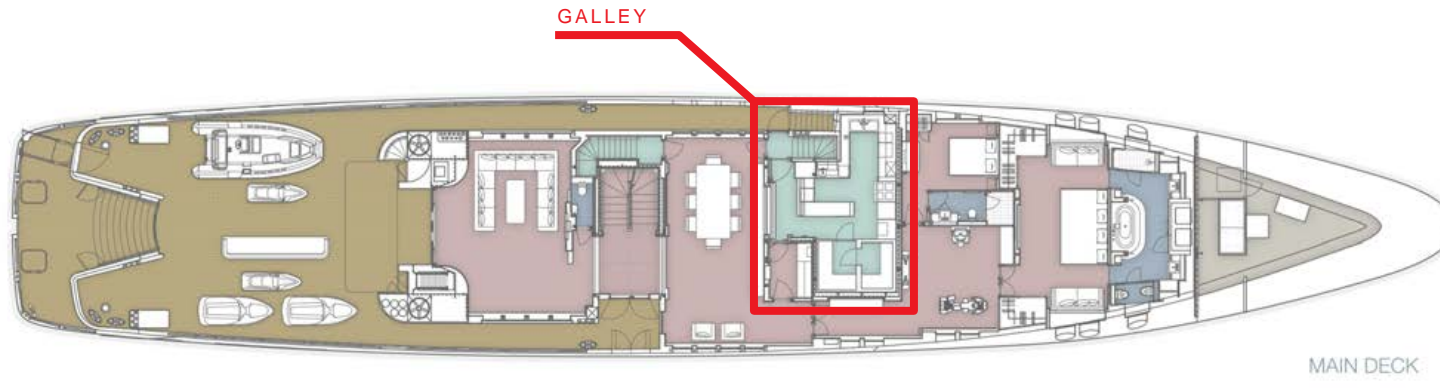
LOWER DECK







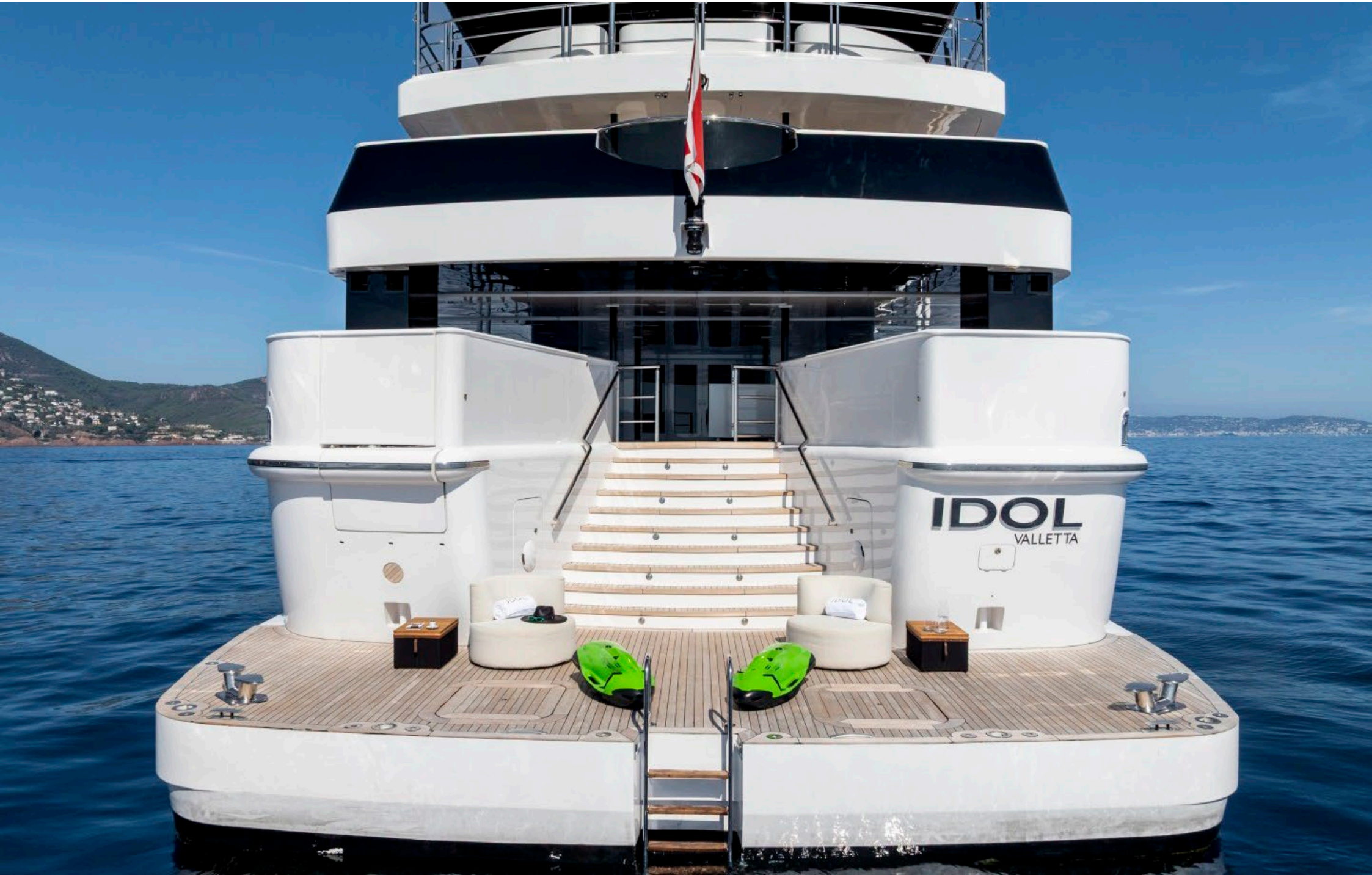




IDOL | 59.90M / 196'06"

 FRASER





IDOL | 59.90M / 196'06"

 FRASER



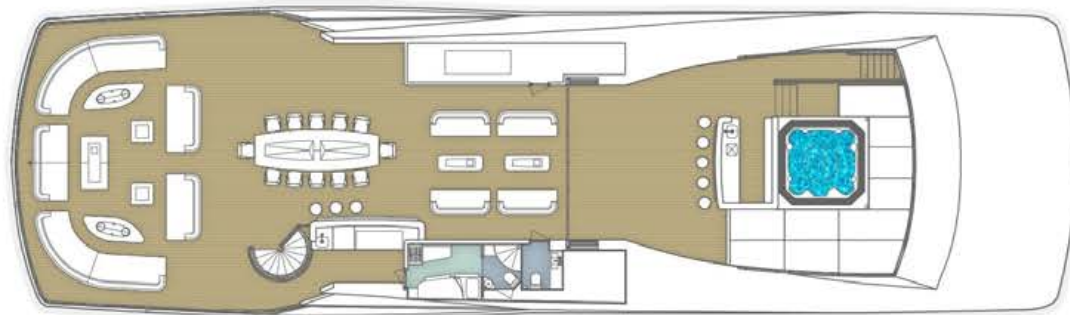
IDOL | 59.90M / 196'06"

 FRASER

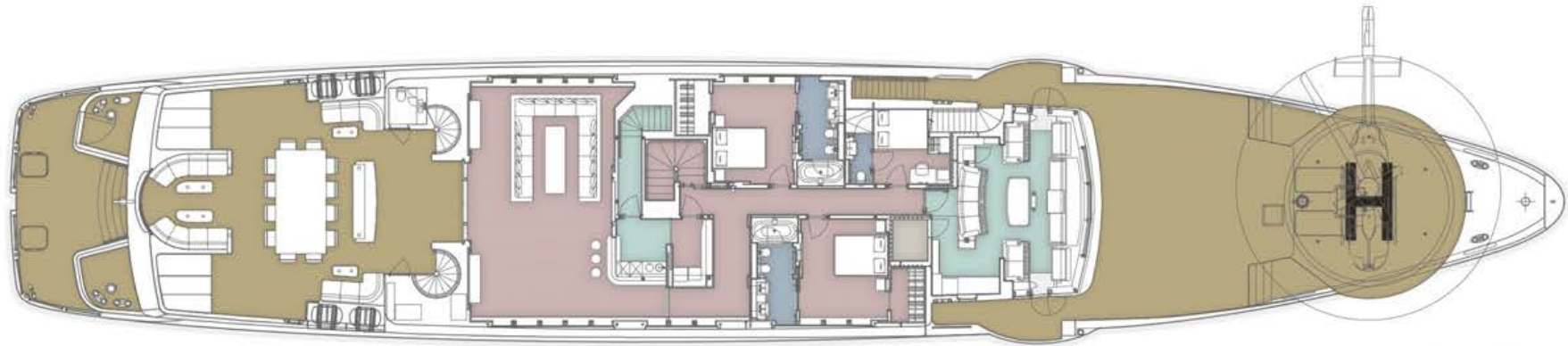


# IDOL

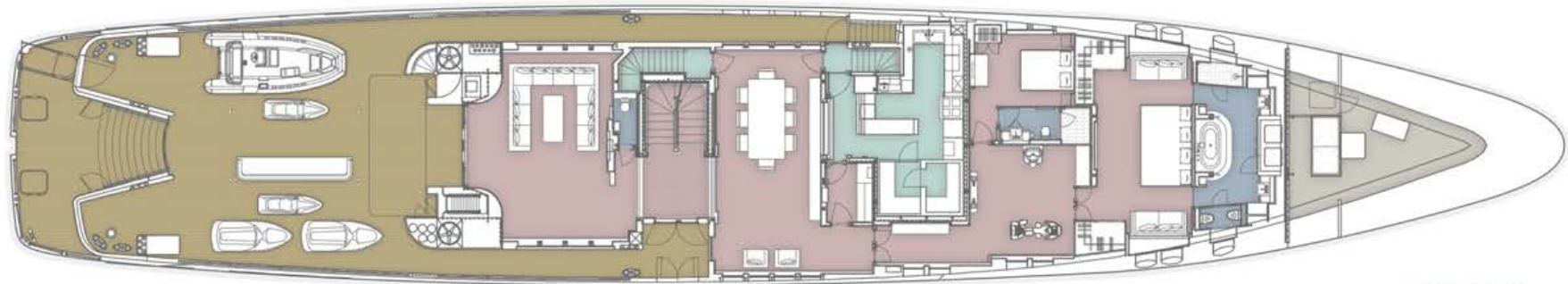
- Guest
- Wet
- Crew
- Technical



SUN DECK



BRIDGE DECK



MAIN DECK



LOWER DECK



FRASER  
YACHTS

